



OCTOBER 2025

3978 US Hwy 26/85  
Torrington, WY 82240  
PO Box 359, Lingle, WY 82223

**How to reach us**  
877-WYRULEC

**E-mail:** [wyrulec@wyrulec.com](mailto:wyrulec@wyrulec.com)  
**Website:** [www.wyrulec.com](http://www.wyrulec.com)

**May through September**  
Office hrs: 6:30–5:00, Mon.-Fri.

**October through April**  
Office hrs: 7:30–4:00, Mon.-Fri.

#### **Board of Directors**

Dewey Hageman  
*President*

Mark Knaub  
*Vice President*

Ben Scott  
*Secretary*

Kenda Knudsen  
*Treasurer*

Julie Kilty  
*Assistant Secretary*

**General Manager**  
Ryan Schilreff

**Senior Staff**  
Miles Duffy  
*Operations Manager*

Tiphanie Fuss  
*Office Manager*

Your cooperative is a proud member of these  
fine organizations



## GENERAL MANAGER'S REPORT



### RATES UPDATE

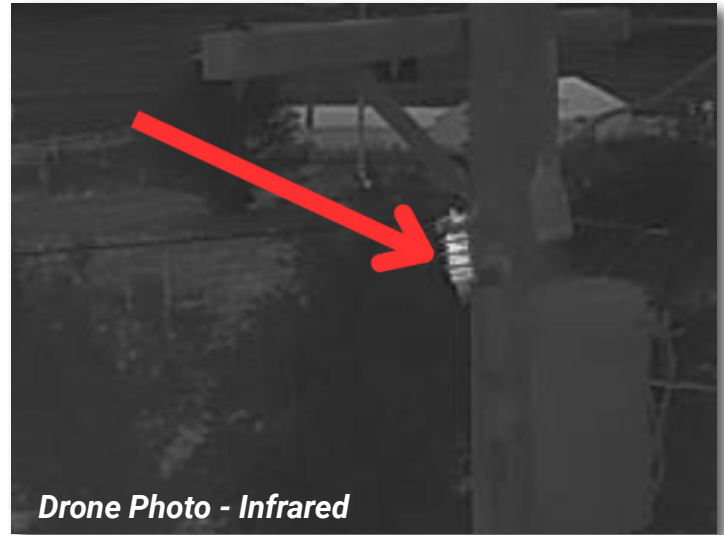
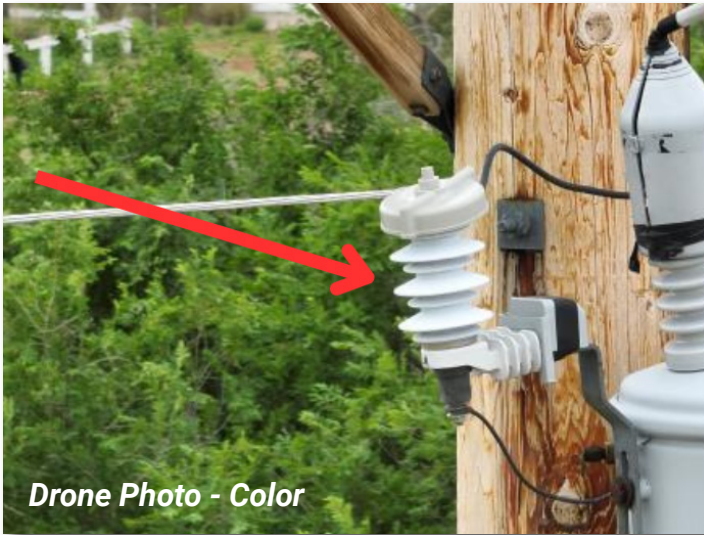
Tri-State Generation and Transmission notified Wyrulec of their intention to raise their wholesale rate to its members. The increase reflects a 7.5% wholesale increase, to take effect in January 2026. The impact on Wyrulec reflects about a 6.8%, or \$1.3M increase to our cost of purchased power based on our current loads. We have engaged our rate consultant to provide us analysis on how this increase will impact each of Wyrulec's rate classes as we look at passing this cost through. Wyrulec will receive no additional retail margins based on these changes. Given the wholesale rate forecasts I have seen, I anticipate additional increases over the next few years as well. These increases aren't unique to Tri-State, as many generation and transmission providers across the country are implementing double-digit increases as they add new resources to their portfolios.

**The following names have been drawn for a \$25 bill credit. Contact Wyrulec Company at 877-WYRULEC to claim your credit!**

Jeanette Pontarolo  
Eldon Garver  
Kent Shannon  
Joanne Schweitzer  
Arthur Elsberry



## CONTINUED. . . MANAGER'S REPORT



### LINE PATROL WITH DRONES

Last year we engaged a drone company to fly 50 miles of our line in Nebraska that was damaged by an ice storm. This proved to be a very cost-effective and productive way to patrol line. The drone took five pictures of each pole and then the pictures were analyzed, and any issues identified were prioritized from critical to non-critical. The Wyrulec crews immediately corrected any critical issues and scheduled the rest for regular maintenance. In addition to the daytime pictures, the drone also takes infrared pictures to identify potential hot spots that can't be seen with the eyes. These hot spots can potentially cause failures or fires. Given the success and cost of contracting the drone company, we flew another 50 miles this year and plan to implement this process as part of our annual maintenance and fire mitigation procedures. See photos above for an example of a hot lightning arrester found on our line, which was only visible with the infrared technology.

### WINTER TIP FOR IRRIGATION SERVICES

If you have a service used for irrigation only (or any other seasonal use), be sure your disconnect switch is in the OFF position for the winter months. If the disconnect is left in the ON position, a small amount of usage could occur in charging equipment such as capacitors in your pump panel, even if the motor is not in use. In order to avoid paying for electricity you aren't using, be sure to check those switches!



# ELECTRIC COOPERATIVE YOUTH TOUR

Every generation leaves behind a legacy, footprints that shape the future. The Electric Cooperative Youth Tour is your chance to do the same. For over 60 years, electric cooperatives have sent high school students to Washington, D.C., to discover their voice, step into history and begin writing the story only they can tell.

This once-in-a-lifetime experience isn't just about seeing the nation's capital. It's about preparing students to lead, to grow and to make their mark on the world.

## What's in it for students?

Delegates from Wyoming will join more than 1,800 students from across the country in Washington, D.C., June 15-21. During the trip, students will:

- Develop leadership skills through hands-on experiences and workshops
- Strengthen their resumes with a nationally recognized program that stands out to colleges and employers
- Connect with peers from 44 states, building friendships that last long after the trip
- Meet with elected officials and learn how government impacts their communities
- Experience history up close by visiting world-class museums and monuments
- Learn about cooperatives and how they support rural communities across America

The best part? All expenses—travel, lodging, meals, and program costs—are covered by either Wyrulec Company or the Wyoming Rural Electric Association (WREA). The program is coordinated by WREA and the National Rural Electric Cooperative Association (NRECA).

## Don't Let This Opportunity Pass By

Applications for Youth Tour will be open from now until December 19th. If you know a high school student who is ready to grow as a leader and take the next step in their journey, encourage them to apply today. Applicants must receive their electric power from Wyrulec Company to be eligible.

This is more than a trip—it's a chance to leave your mark.

For details and applications, visit our website at <https://wyrulec.com/youth-tour> or give us a call at 877-WYRULEC (877-997-8532).

More information can also be found at:

[www.electric.coop/our-organization/youth-programs/about-the-youth-tour](http://www.electric.coop/our-organization/youth-programs/about-the-youth-tour)

# How will you MAKE YOUR MARK?



A week of building memories, skills, leadership  
and friendships that will last a lifetime!

## Experience the trip of a lifetime with Youth Tour!

- Explore Washington, D.C. through historic monuments, world-class museums, and visits with elected officials.
- Build leadership skills and discover how you can make your mark on the future.
- Connect with students from across the country and form friendships that last a lifetime, all sponsored by your local electric cooperative.

Learn more and apply at  
[wyrulec.com/youth-tour](http://wyrulec.com/youth-tour)

MAKE YOUR MARK!

