



MAY 2025



3978 US Hwy 26/85
Torrington, WY 82240
PO Box 359, Lingle, WY 82223

How to reach us
877-WYRULEC

E-mail: wyrulec@wyrulec.com
Website: www.wyrulec.com

May through September
Office hrs: 6:30–5:00, Mon.-Fri.

October through April
Office hrs: 7:30–4:00, Mon.-Fri.

Board of Directors

Dewey Hageman
President

Mark Knaub
Vice President

Ben Scott
Secretary

Kenda Knudsen
Treasurer

Julie Kilty
Assistant Secretary

General Manager
Ryan Schilreff

Senior Staff
Miles Duffy
Operations Manager

Tiphany Fuss
Office Manager

GENERAL MANAGER'S REPORT

I hope this article finds you well and off to a great start this spring. I have a few topics to cover in this month's article and I also want to thank all those who were able to attend the Annual Meeting this year.

Tri-State Energy Resource Plan

As I have mentioned in the past, the state of Colorado's Public Utility Commission (PUC) regulates Tri-State in reference to what resources Tri-State selects to generate electricity through the regulated energy resource planning process. While Colorado's PUC regulates the resource planning process, they do not regulate Tri-State's rates. However, these two topics are closely related as the resources can only be paid for through rates by the Tri-State membership.

Tri-State just filed its most current Electric Resource Plan with the Colorado PUC for approval. This Resource Plan is probably the most transitional and costly plan they have filed. The following are some of the resources that will be built or contracted over the next 1 to 10 years for capacity and reliability:

- 400 megawatts of wind
- 200 megawatts of solar
- 100 megawatts of solar + battery storage
- 600 megawatts of lithium-ion batteries
- 307 megawatts of gas turbines

Tri-State received a large allocation of funds through the Inflation Reduction Act, which is a mixture of grants and low interest loans in an amount close to \$3.7B to help build these resources. One caveat is those funds can only be used to build renewable resources, so the cost of the gas plant is outside of the government funding.

The reason this is all so important is that while the grants and low interest loans help financially, there must be equity involved as well, and equity comes from the membership in the form of rates. An



Ryan Schilreff
General Manager

Your cooperative is a proud member of these fine organizations



continued . . .

continued . . . MANAGER'S REPORT

example would be building something that costs \$500M dollars. Tri-State must keep an equity position of 20% based on their financial lender's requirements. So \$100M of the \$500M must come from the membership in the form of equity to be compliant with their lenders.

As I mentioned at the annual meeting, I think we need to be prepared for wholesale rate increases starting in 2026 or 2027 and continuing over the next several years to fund these new assets.

Pole Inspections

Each year we inspect approximately 3,000 poles across our system. At the end of May our contractor will be conducting these inspections in the Yoder/Huntley area. The contractor will utilize four wheelers to conduct their work. If our contractor is going to be in your area, the Wyrulec office will give you a call prior to them arriving to make sure you know they will be out and about.

The Wyrulec Office will be closed on Monday, May 26th.

Honoring the brave heroes who made the ultimate sacrifice for our freedom.

WYRULEC SCHOLARSHIP PROGRAM

Eleven local students were awarded scholarships at the 89th Annual Meeting on March 27th. Every year we award scholarships to students who receive their electrical power from Wyrulec Company, and this year the Wyrulec scholarships were increased from \$1,000 to \$1,500 each, for a total \$13,500. These Wyrulec scholarships are made possible by funds from donated or unclaimed capital credits. In addition to that, Tri-State Generation & Transmission finances a \$1,000 scholarship, and Basin Electric Power Cooperative finances an additional \$1,000 scholarship, bringing the total to \$15,500 awarded to local students.

We firmly believe that investing in our youth is crucial for the future of our communities. By providing these scholarships, we encourage our students to pursue their educational goals, and we hope to empower them as they seek a bright future where they will continue to positively impact their communities.

We would like to extend a huge thank-you to all students who applied. We received applications from many talented students, and our Scholarship Committee (comprised of one volunteer from each member district) had the challenging task of choosing the recipients from a pool of exceptional applicants. We would like to congratulate the following outstanding students who were selected for scholarships to assist with their pursuit of education or trade skills:

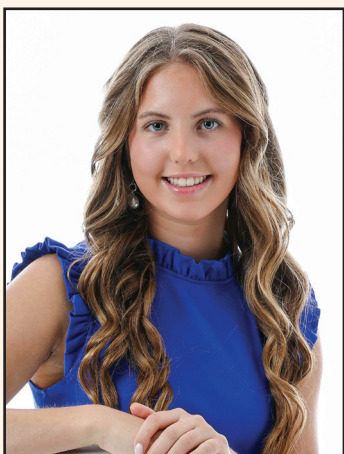


The following names have been drawn for a \$25 bill credit. Contact Wyrulec Company at 877-WYRULEC to claim your credit!

Mari Chapman
James Todd Irvine
Kent Hunter
Dean & Christine Johnson
Edward Rein



continued . . . WYRULEC SCHOLARSHIP PROGRAM



© Angela Hill Photography

Sarah Birdsall
(Torrington High School) -
Wyrulec Scholastic Scholarship



© Dylan Flores Photography

Wittni Bugher
(Torrington High School) -
Wyrulec Scholastic Scholarship



© Eric Houk

Jersey Houk
(Lingle-Fort Laramie High
School) - Wyrulec Scholastic
Scholarship



© Samantha Wagner-Yung

Peyton May
(Scottsbluff High School) -
Wyrulec Scholastic Scholarship



© Kim Stokes

Teryn Stokes
(Torrington High School) -
Wyrulec Scholastic Scholarship



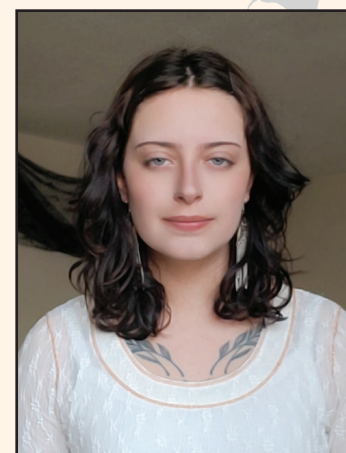
© Dirt Road Wife Photography

Skyler Thomas
(Lingle-Fort Laramie High
School) - Wyrulec Scholastic
Scholarship



© Vicky Barkman

Kaeden Barkman
(Homestead Academy) -
Wyrulec Trade Scholarship



© Isabel Brott

Isabel Brott
(Western Nebraska Community
College) - Wyrulec Trade
Scholarship



© Cora Ayers

Cora Ayers
(Baylor University) - Wyrulec
Renewable Scholarship



© Sunshine Photography

Louden Bremer
(Lingle-Fort Laramie High
School) - Tri-State G&T
Association Scholarship



© Refuse to Lose Photography

Klacie Groene
(Casper College) - Basin Electric
Power Cooperative Scholarship

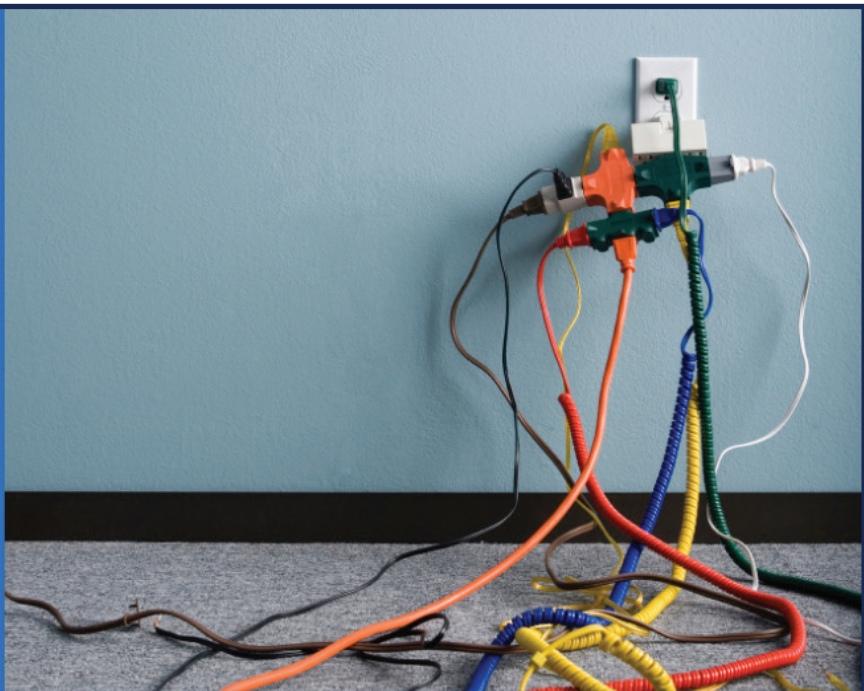
TIME TO MAKE THE SWITCH

During the summer, the ceiling fan direction should run counterclockwise to help create a downdraft, which creates that direct, cooling breeze.



Safe
Electricity.org®

PLUG INTO SAFETY



Overloaded electrical outlets?
It's time to call an electrician and
install new outlets.