



AUGUST 2023



## GENERAL MANAGER'S REPORT

### STORMS

What a difference a year makes! After coming off three years of drought, I think we forgot what it was like to chase lightning storms from Platte County all the way to Banner County to restore power outages. While the rain has been a blessing for our service territory, it has brought us some challenges as well.

On Friday, June 23rd, we experienced a tornado just south of Hawk Springs that destroyed nine transmission poles. Our crews worked through the night to restore power to our members. One great benefit of our electric system is we have many redundant feeds and tie lines, which allow us to minimize outage times and feed electricity to our members from multiple delivery points. Our crews rebuilt the distribution system, restored power, and fed the transmission line from two different delivery points temporarily.

At that time we also had powerlines down on the highway. Remember **NEVER** get out of your vehicle if there are downed powerlines. While the lines may not be sparking and appear harmless, they can still have 7,200 volts running through them, which is deadly. In order to permanently repair that line, we will have to take a few small outages over the next few weeks to allow our contractors to replace those poles. Our office staff will notify you if any of your services will be affected by this construction.

We were notified that several of our neighboring cooperatives and our transmission providers, Tri-State Generation & Transmission and the Western Area Power Administration (WAPA), have also experienced some challenges with the weather causing outages. When our transmission providers are experiencing problems, many times that will trickle down to our distribution lines as well and extend the outage times. Remember when calling to report an outage at any time dial **1-877-WYRULEC**.

*continued . . .*

**The following names have been drawn for a \$25 bill credit. Contact Wyrulec Company at 877-WYRULEC to claim your credit!**

Erin Daly  
B June Walker  
Brian Blosmo  
Mark Koehler  
Jeremiah Donaldson



3978 US Hwy 26/85  
Torrington, WY 82240  
PO Box 359, Lingle, WY 82223

**How to reach us**  
877-WYRULEC

**E-mail:** [wyrulec@wyrulec.com](mailto:wyrulec@wyrulec.com)  
**Website:** [www.wyrulec.com](http://www.wyrulec.com)

**May through September**  
Office hrs: 6:30–5:00, Mon.-Fri.

**October through April**  
Office hrs: 7:30–4:00, Mon.-Fri.

#### Board of Directors

Julie Kilty  
*President*

Dewey Hageman  
*Vice President*

Mark Knaub  
*Secretary*

Ben Scott  
*Treasurer*

Kenda Knudsen  
*Assistant Secretary*

**General Manager**  
Ryan Schilreff

**Senior Staff**  
Miles Duffy  
*Operations Manager*

Tiphanie Fuss  
*Office Manager*

Your cooperative is a proud member of these fine organizations



## CONTINUED. . . GENERAL MANAGER'S REPORT

### WHOLESALE RATES/DESIGN CHANGE

As we expected, Tri-State filed its new wholesale formulary rate and a rate increase with the Federal Energy Regulatory Commission (FERC). We had been anticipating both of these filings for some time; what we didn't know was how the change would affect Wyrulec. Based on our load factor and year-to-date billing units, we anticipate Wyrulec will experience a 7.5% increase in our cost of purchased power, which will go into effect January 2024. These filings have been protested by several cooperatives, so we expect it will be subject to refund and settlement. This means the rate will be approved but could change, pending a hearing.

There are many parts to a formulary rate that can affect the cost to our cooperative. Under Tri-State's formulary rate filing there is also a true-up provision, meaning if Tri-State over or under collects revenue (based on their financial goals) during the operating year, they will pass that increase or decrease on to their member cooperatives in the future year. Based on Tri-State's rate changes, Wyrulec will implement what is called a Power Cost Adjustment on our bills, in order to pass through the true-up amount at our local level. For example: Tri-State will close out the 2024 operating year December 2024, and complete its audited financials around April 2025. At that time, they will know the exact amount of revenue they either over or under collected based on their financial goals for that year. That dollar amount will be passed on to Wyrulec and the other 41 members on a pro rata basis, as an increase or decrease to our wholesale cost of power in the 12 months of the 2026 operating year. This process will repeat itself year after year. We don't expect this to have a large impact on us. However, our billing statements will look different starting in 2025, and will have a line for the Power Cost Adjustment (PCA). We have intervened in this FERC case to make sure we protect the best interests of our members. Wyrulec's financial position remains strong, which gives us flexibility to face these industry changes and make decisions that are best for our membership. We will keep you updated prior to any of these changes taking effect.

### GRANTS

Over the past few months, we have researched the possibility of accessing some of the Inflation Reduction Act (IRA) funds, along with two other programs associated with USDA that allocated \$9.7 billion dollars for clean energy resources. After researching several projects (including hydro) in our area and the timeline associated with the application process, we didn't come up with anything solid to move forward with. It's our hope that Tri-State can access those funds on a utility-scale level in order to benefit us and the rest of their membership.

We did, however, submit a pre-application for a Department of Energy (DOE) grant specifically for grid resiliency in rural areas. If awarded, we would receive up to \$4.5 million dollars to upgrade some of our existing infrastructure. We hope to know in the next 30 days if we will get the green light to move forward with the full application process.

### **HAPPY LABOR DAY!**

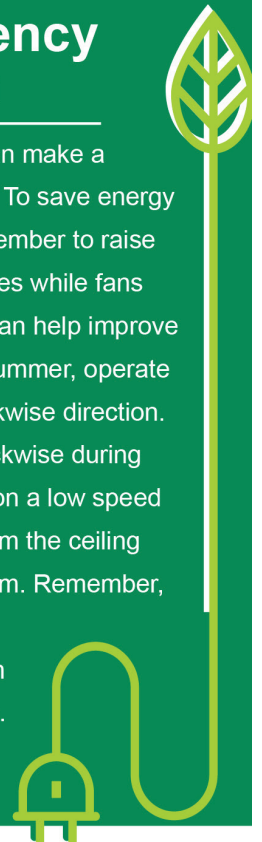
The Wyrulec Office will be closed on Monday, September 4th. Please call 877-WYRULEC if you need to report an outage.



### Energy Efficiency Tip of the Month

Did you know ceiling fans can make a room feel 4 degrees cooler? To save energy through ceiling fan use, remember to raise your thermostat a few degrees while fans are turned on. Ceiling fans can help improve comfort year-round. In the summer, operate ceiling fans in a counterclockwise direction. Reverse the direction to clockwise during winter months and set fans on a low speed so warm air can circulate from the ceiling to the lower levels of the room. Remember, ceiling fans cool people, not spaces. Be sure to turn them off when you leave the room.

Source: Dept. of Energy



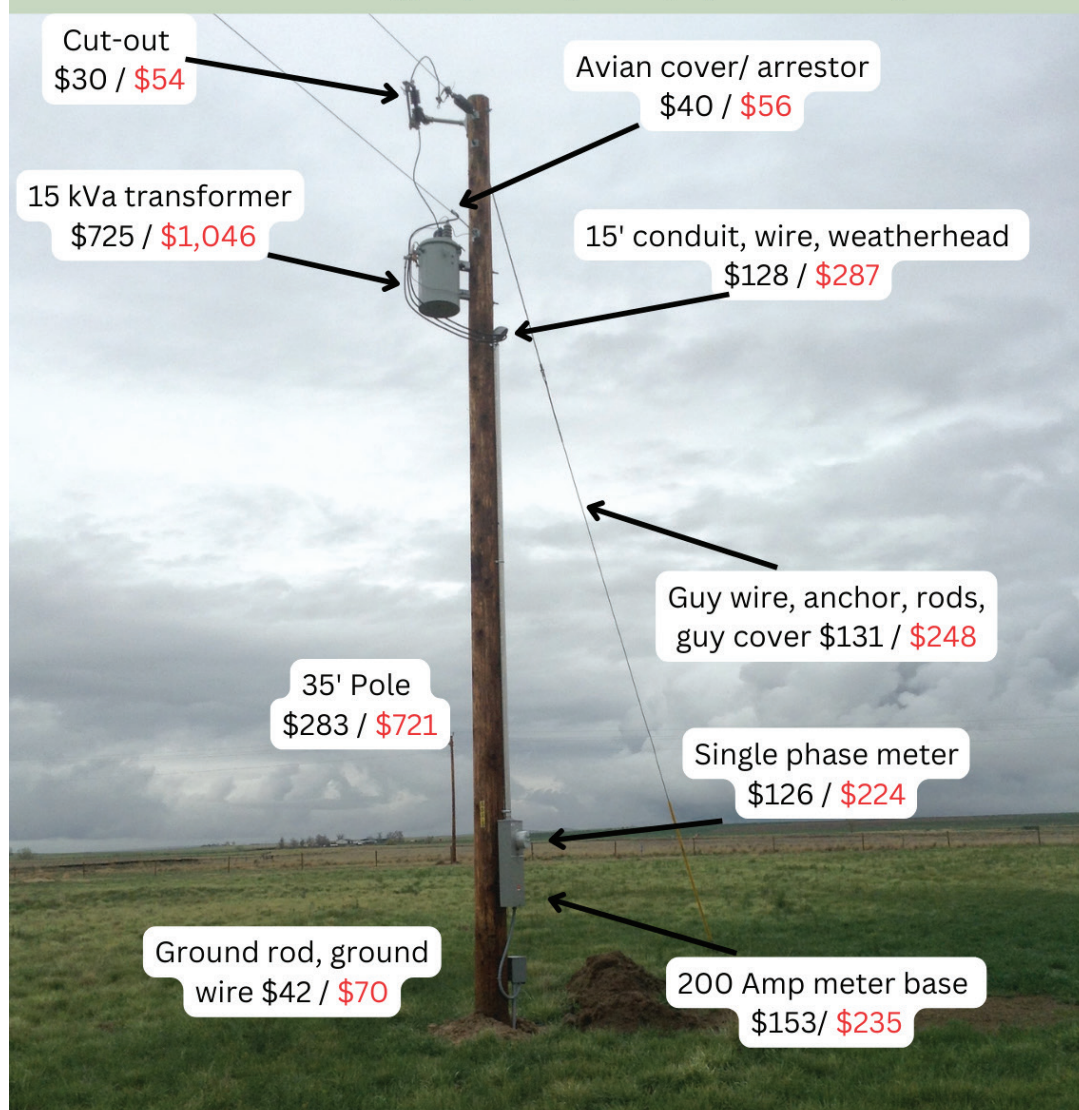


# Rising Costs

The photo below shows Wyrulec's cost for materials required to build a new single-phase service in 2017, as compared to now in **2023**. This doesn't include the cost of the wire or labor.

The current lead time for ordering transformers is 60 weeks. We have been fortunate to be able to keep enough transformers in inventory to accommodate any new service requests from our members, but inventory is somewhat of a juggling act with the extensive lead times. Please be sure to let us know ahead of time if you are planning a new service.

**\*For all new services, Wyrulec provides the transformer, meter, and meter base at no charge, along with a construction allowance of \$1,800 for single-phase, and \$3,600 for 3-phase service.**



**Total Cost of  
Material in  
2017: \$1,658**

**Total Cost of  
Material in  
2023: **\$2,941****



# DORM SAFETY: 101

## AVOID ELECTRICAL OVERLOAD



It's the time of year when college campuses are preparing for students moving all of their worldly possessions into their home away from home - the dorm!

Safe Electricity urges everyone to make sure their college-bound students take precautions to prevent and protect themselves from campus-related fires and shocks. **Do not overload your electrical outlets, power strips, or extension cords.** Use power strips with an over-current protector that will shut off power automatically if there is too much current being drawn.



**Potentially older wiring in student housing and apartments may not be able to handle the increased electrical demand of today's college student.** If use of an appliance frequently causes power to trip off or if its power cord or the outlet feels hot, the appliance should be disconnected immediately and the condition reported to a resident assistant or housing manager.



Visit [SafeElectricity.org](http://SafeElectricity.org) for a complete list of safety steps to prevent and reduce the risk of electrical fires.

