



JUNE 2022



3978 US Hwy 26/85  
Torrington, WY 82240  
PO Box 359, Lingle, WY 82223

**How to reach us**  
877-WYRULEC

**E-mail:** [wyrulec@wyrulec.com](mailto:wyrulec@wyrulec.com)  
**Website:** [www.wyrulec.com](http://www.wyrulec.com)

**May through September**  
Office hrs: 6:30–5:00, Mon.-Fri.

**October through April**  
Office hrs: 7:30–4:00, Mon.-Fri.

#### **Board of Directors**

Julie Kilty  
*President*

Dewey Hageman  
*Vice President*

Mark Knaub  
*Secretary*

Ben Scott  
*Treasurer*

Kenda Knudsen  
*Assistant Secretary*

**General Manager**  
Ryan Schilreff

**Senior Staff**  
Miles Duffy  
*Operations Manager*

Tiphonie Fuss  
*Office Manager*

Your cooperative is a proud member of these  
fine organizations



## **WYRULEC SCHOLARSHIP PROGRAM**

**T**his year we awarded \$10,000 in scholarships to students who receive their electrical power from Wyrulec Company. The Scholastic and Trade scholarships (\$1,000 each) are made possible by funds from donated or unclaimed capital credits. Tri-State Generation & Transmission also finances two \$1,000 scholarships for member students.



Wyrulec Company is dedicated to the communities we serve, and we're proud to provide an investment in the future of our youth.

We would like to congratulate the following outstanding students on earning a scholarship to assist in their pursuit of a higher education. Recipients are chosen by a Scholarship Committee comprised of one volunteer from each of the member districts.



## continued . . . WYRULEC SCHOLARSHIP PROGRAM



© Samantha Yung

**M'Lynn Hill**  
(Lingle-Ft. Laramie High School)  
Wyrulec Scholastic Scholarship



© Dirt Road Wife Photography

**Jakob Llewellyn**  
(Southeast High School)  
Wyrulec Scholastic Scholarship



© Susan Vanatta

**Matthew Vanatta**  
(Torrington High School)  
Wyrulec Scholastic Scholarship



© Tobiano Studios

**Dally Wilkins**  
(Lingle-Ft. Laramie High School)  
Wyrulec Scholastic Scholarship



© Madison Deming

**Hannah Eising**  
(Frontier School of the Bible)  
Wyrulec Trade Scholarship



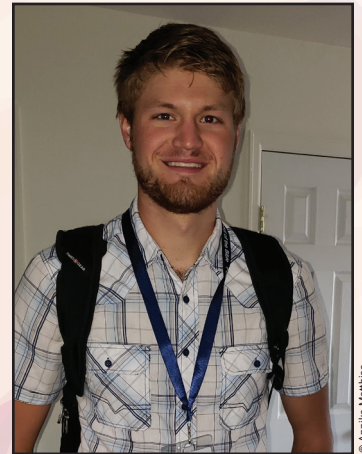
© Cidney Hale

**Colby Hale**  
(Frontier School of the Bible)  
Wyrulec Trade Scholarship



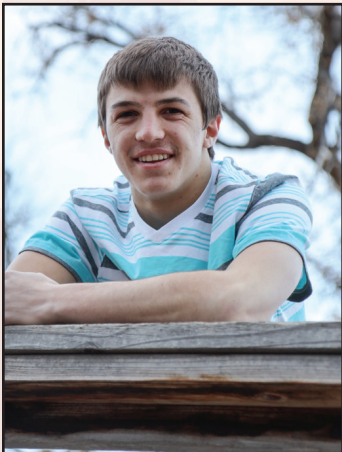
© Caleb Wilkinson

**Rebekah Ingraham**  
(Frontier School of the Bible)  
Wyrulec Trade Scholarship



© Amika Matthias

**Ryan Matthias**  
(Frontier School of the Bible)  
Wyrulec Trade Scholarship



© Self

**Durward Randall**  
(Southeast High School)  
Tri-State G&T Association  
Scholarship



© Shaw Photography

**Sadie Sturman**  
(Laramie County Community  
College) Tri-State G&T  
Association Scholarship





# ALWAYS ASSUME **LIVE**

Downed power lines can be **deadly**. Always assume a downed power line is **live** and avoid approaching them or anything near them.

## Use Precaution



Downed power lines can energize the ground up to **35 feet away**. Even more in wet conditions.



**Never drive over** downed power lines or anything in contact with them.



If you see a downed power line, **call 911**.



**Never try to move** a downed power line.

If a vehicle contacts a **power line** or **utility pole**...

## STAY AWAY AND CALL 911



Consider **all lines** to be live and dangerous.



Stay in place or inside your vehicle unless you see **fire** or **smoke**.



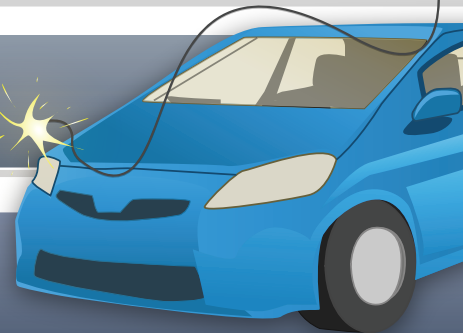
Warn others to stay at least **35 feet away**.



**Tell others** not to approach vehicle, downed lines, or anything that may be in contact with downed lines.



Call **911**.



## In the Event of Fire or Smoke

**Do not** touch the ground and vehicle at the **same time**.



Jump from the vehicle with your **feet together**.



**Shuffle away**, avoid lifting your feet.



## How to Save Money in the Laundry Room

Ah, the joys of having a washer and dryer in your home. → There's no waiting for a machine, no coin slots, and no one taking out your wet load if you aren't right there when the cycle ends.

Although it's cheaper per load and much more convenient to do laundry at home, there's a somewhat hidden cost to consider, and that's the energy it takes to run your washer and dryer.

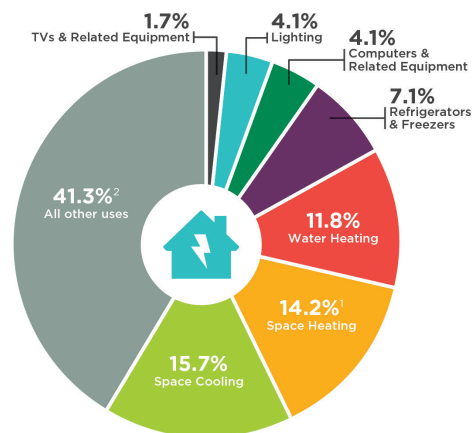
What appliances in your home use the most energy? The hot water heater is the appliance that costs the most to run. Right behind it is the washer and dryer's combined energy use. (Although not considered appliances by many, heating/cooling tops the list, followed by the hot water heater.)

A dryer requires more energy to run than a washer, but there are ways to reduce your washing costs, too (think hot water versus cold). To save money in your laundry room, consider these tips:

- When using your washing machine, select the right amount of water for the load – that is, don't select the "extra large" setting when doing a small load. In fact, consider waiting to do laundry until you have full loads to conserve water.
- Use cold water to save the money you spend heating water. Some laundry detergents are designed to tackle stains in cold water.
- Using warm water instead of hot can cut a load's energy use in half, and using cold water will save even more, according to energy.gov.
- Use dryer balls, which help separate clothes and get more air to them, cutting drying time.
- Utilize lower settings when you use the dryer. Even if your dryer runs longer, you'll use less energy and be less likely to over-dry your clothes.
- Clean the lint out of your dryer between loads and scrub the filter once a month to remove buildup.

### How Americans Use Electricity

The latest data from the U.S. Energy Information Administration shows the combined use of clothes washers and dryers, dishwashers, small appliances and other electrical equipment (noted as "all other uses" below) accounts for the largest percentage of electricity consumption in American homes.



Source: Energy Information Administration 2021

<sup>1</sup>Includes consumption for heat and operating furnace fans and boiler pumps.  
<sup>2</sup>Includes miscellaneous appliances, clothes washers and dryers, stoves, dishwashers, heating elements, and motors.

Put like items together since lighter-weight clothes take less time to dry. Drying towels and heavier cottons take longer.

- Use the moisture sensor option on your dryer if it has one.
- When purchasing a dryer, consider an Energy Star version, which uses 20 percent less energy than a conventional model.
- Energy Star-certified washers use about 25 percent less energy and 33 percent less water than regular clothes washers.
- Thoroughly clean your dryer's vents and duct system at least twice a year.

To learn more about how much you are spending to run your washer and dryer each year, refer to energy.gov's appliance energy use calculator.

For more information about safety around electricity, visit SafeElectricity.org.

**The following names have been drawn for a \$25 bill credit.  
Contact Wyrulec Company at 877-WYRULEC to claim your credit!**

Gene Lay	Gary Darnall
Roger Wunder	Travis Rodewald
Jamie Koops	

