



MARCH 2022



# CO-OP NEWS

## GENERAL MANAGER'S REPORT

### The Power Behind Your Power *Lineworker Appreciation Day is April 11.*

You've likely noticed Wyrulec's crews out and about, working on power lines and other electrical equipment in our community. It's no secret that a lineworker's job is tough--but it's a job that's essential and must be done, often in challenging conditions. This month, as we celebrate Lineworker Appreciation Day on April 11, we thought we'd share some interesting facts about electric lineworkers with you.

The work can be heavy, in more ways than one. Did you know the equipment and tools that a lineworker carries while climbing a utility pole can weigh up to 50 pounds? That's the same as carrying six gallons of water. Speaking of utility poles, lineworkers are required to climb poles ranging anywhere from 30 to 120 feet tall. Needless to say, if you have a fear of heights, this likely isn't the career path for you.

Lineworkers must be committed to their career--because it's not just a job, it's a lifestyle. The long hours and ever-present danger can truly take a toll. In fact, being a lineworker is listed in the top 10 most dangerous jobs in the U.S.

Lineworkers often work non-traditional hours, outdoors in difficult conditions. While the job does not require a college degree, it does require technical skills, years of training and hands-on learning. Did you know that to become a journeyman lineworker can take more than 8,000 hours of training (or about four years)? That's because working with high-voltage equipment



3978 US Hwy 26/85  
Torrington, Wyoming 82240  
PO Box 359, Lingle, 82223

**How to reach us**  
877-WYRULEC

**E-mail:** [wyrulec@wyrulec.com](mailto:wyrulec@wyrulec.com)  
**Website:** [www.wyrulec.com](http://www.wyrulec.com)

**May through September**  
Office hrs: 6:30–5:00, Mon.-Fri.

**October through April**  
Office hrs: 7:30–4:00, Mon.-Fri.

#### Board of Directors

Kenda Knudsen  
*President*

Julie Kilty  
*Vice President*

Mark Knaub  
*Treasurer*

Dewey Hageman  
*Secretary*

Ben Scott  
*Assistant Secretary*

**General Manager**  
Ryan Schilreff

**Senior Staff**  
Miles Duffy  
*Operations Manager*

Tiphannie Fuss  
*Office Manager*

Your cooperative is a proud member of these fine organizations



*continued . . .*

## ***continued . . .* The Power Behind Your Power**

requires specialized skills, experience, and an ongoing mental toughness. Shortcuts are not an option, and there is no room for error in this line of work.

Despite the many challenges, Wyrulec's lineworkers are committed to powering our community. During severe weather events that bring major power outages, lineworkers are among the first ones called. They must be ready to leave the comfort of their home and families unexpectedly, and they don't return until the job is done, sometimes days later. That's why the lineworker's family is also dedicated to service. They understand the importance of the job to the community.

Nationwide, there are approximately 120,000 electric lineworkers. Here at Wyrulec, we have 14 lineworkers that are responsible for keeping the power flowing 24/7, 365 days a year. To do this, they maintain 2,023 miles of power line across 2 states, 5 counties and 3,356 square miles. In addition to the highly visible tasks performed, today's lineworkers can pinpoint power outages from miles away by utilizing laptops, maps, and other technologies to map outages and troubleshoot problems. While this technology is often helpful in



**The following names have been drawn for a \$25 bill credit. Contact Wyrulec Company at 877-WYRULEC to claim your credit!**

Robert Fertsch  
Christopher Cook  
Jerry Shimic  
Steve Streeks  
Hazel Carr







## DO YOU KNOW ABOUT LINEWORKERS?

Every April, we celebrate lineworkers and the hard work they do to make sure we have electricity to power our lives.

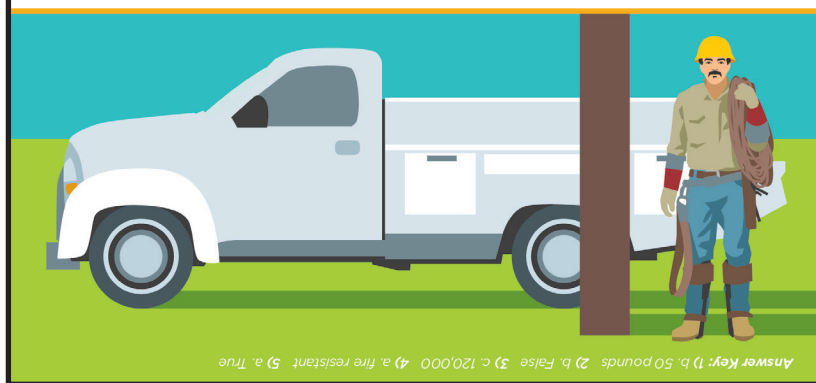
How much do you know about lineworkers?

Take the quiz below to find out!

(Use the answer key to check your work.)



- Lineworkers have to wear a lot of gear to do their jobs. A lineworker's gear can weigh up to \_\_\_\_\_.
  - 15 pounds
  - 50 pounds
  - 80 pounds
- Lineworkers maintain and repair electrical lines, but they do not install them.
  - True (no installation)
  - False (They maintain, repair *and* install lines.)
- There are approximately \_\_\_\_\_ lineworkers in the United States.
  - 50,000
  - 90,000
  - 120,000
- Lineworkers must wear \_\_\_\_\_ clothing to protect them from a possible electric arc while working.
  - fire resistant
  - extra thick
  - leather or rubber
- Lineworkers must wear special conductive boots when climbing a steel structure.
  - True
  - False



Answer Key: 1) b. 50 pounds 2) b. False 3) c. 120,000 4) a. fire resistant 5) a. True

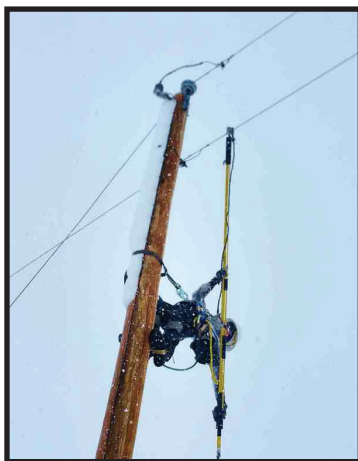


## *continued . . .* The Power Behind Your Power

locating an outage, lineworkers must still travel and make repairs wherever needed.

Being a lineworker may not seem like a glamorous job, but it is absolutely essential to the life of our community. Without the exceptional dedication and commitment of these hardworking men and women, we simply would not have the reliable electricity that we need for everyday life.

While everyone at Wyrulec Company works hard to provide reliable service, this month we salute our lineworkers who work around the clock to keep the power on. So, the next time you see them, please thank them for the work they do to keep the power flowing, regardless of the time of day or weather conditions. Afterall, lineworkers are the power behind your power.



### **Digging into an outdoor project?**

Dial 811 or visit [www.call811.com](http://www.call811.com) first to protect underground utility lines.

April is National #SafeDiggingMonth